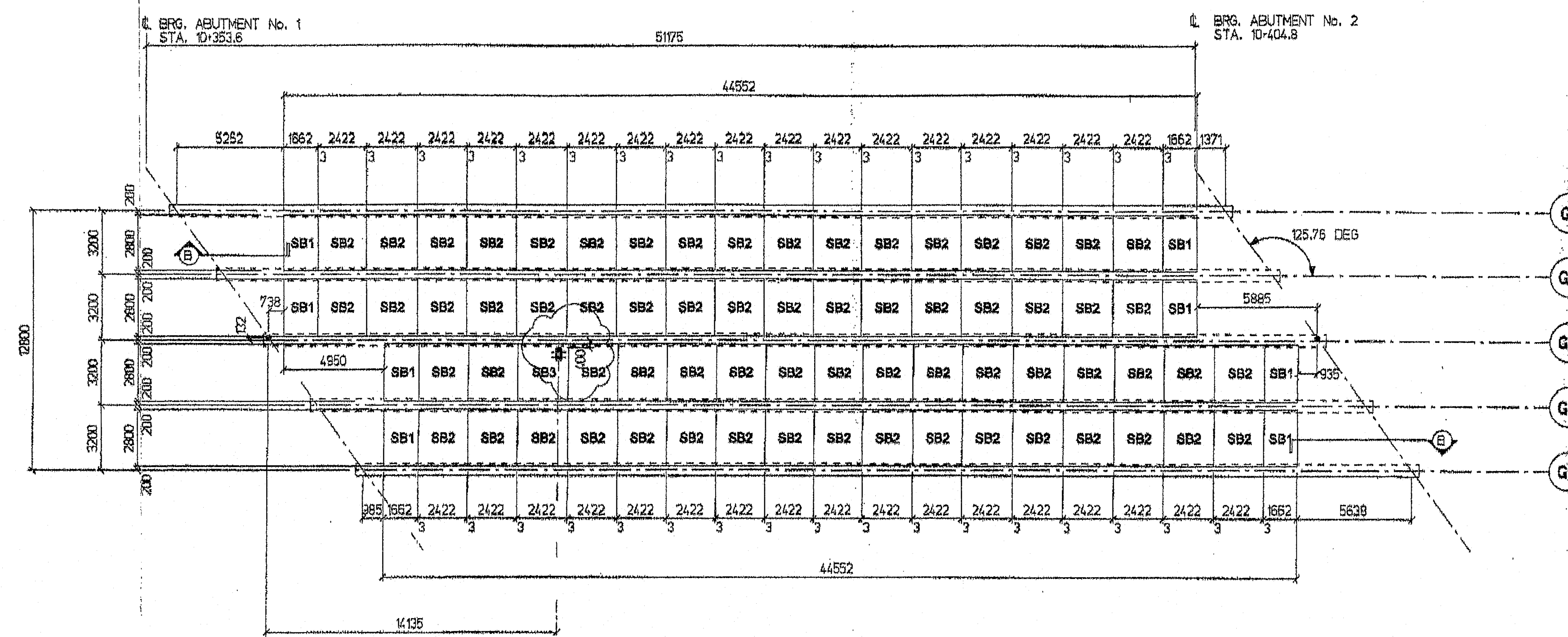


130-428

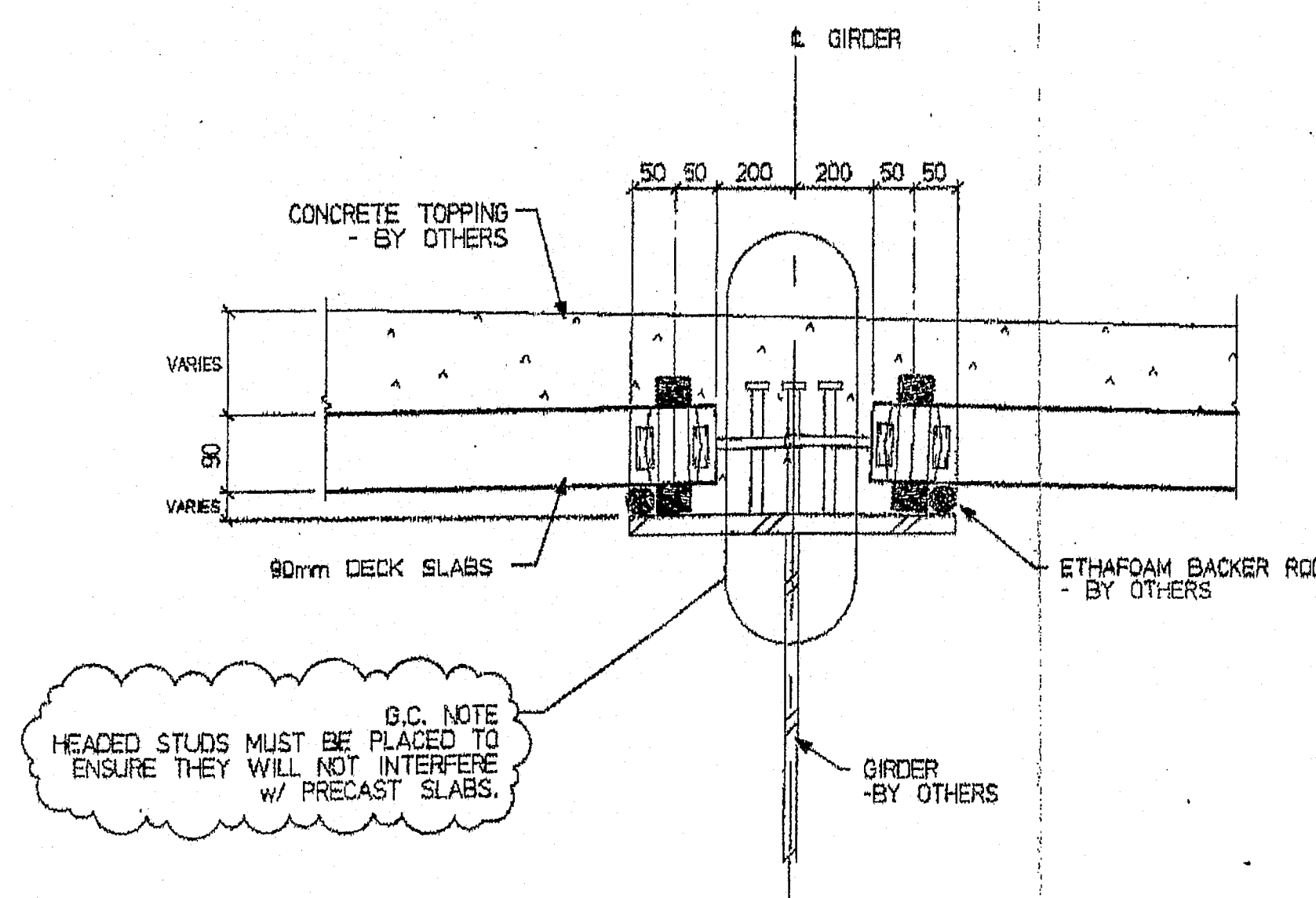


NORTH

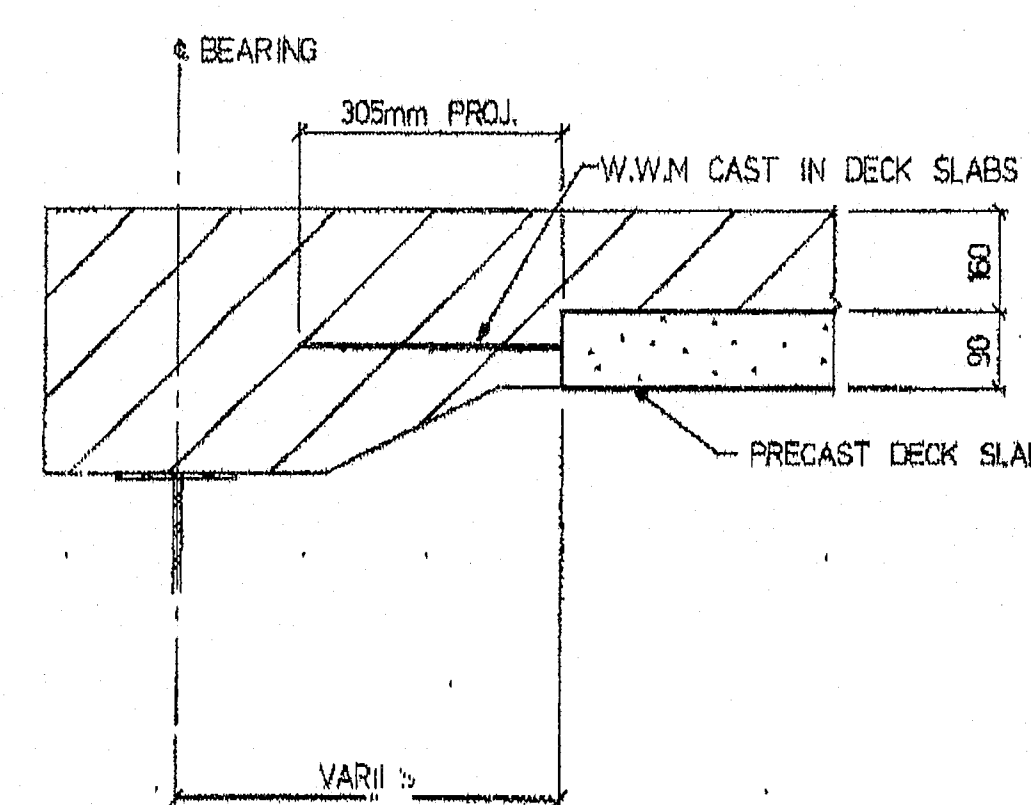
REVIEWED  
09/11/03  
DAN GLENN



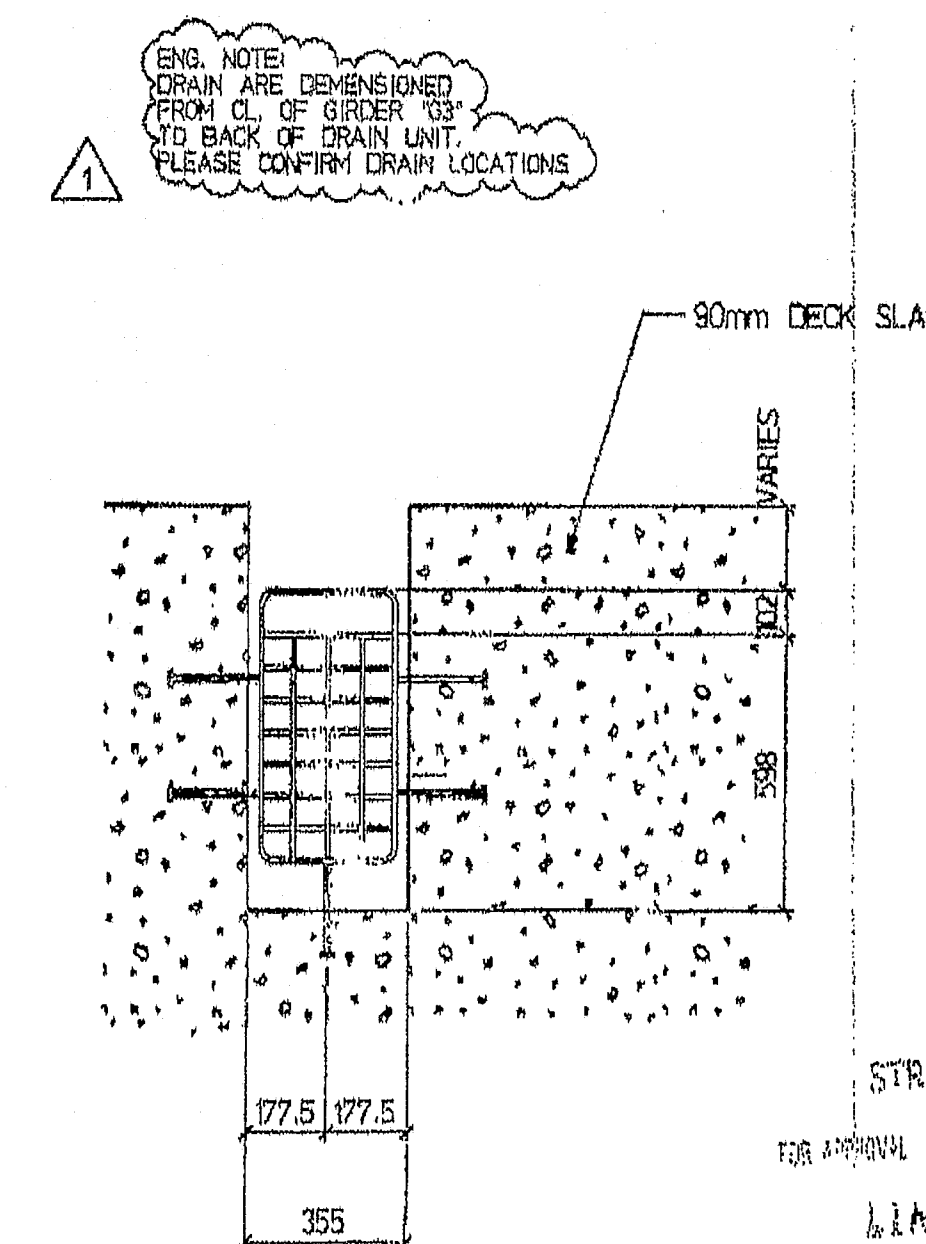
DECK SLAB LAYOUT



TYPICAL BEARING  
DETAIL



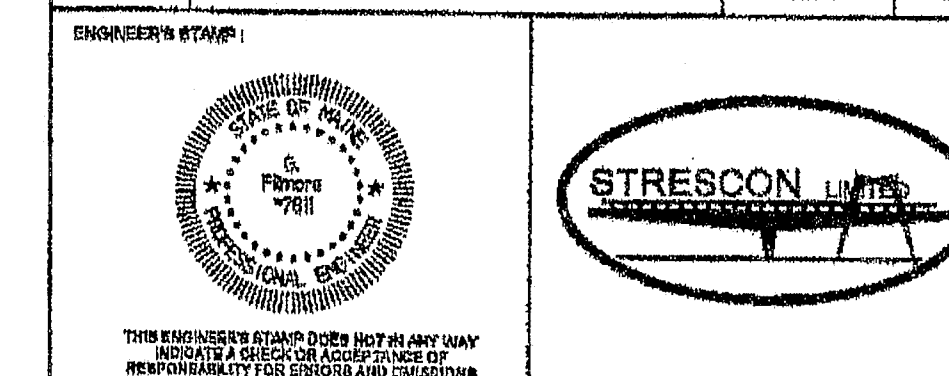
SECTION "B"  
TYP. AT EACH ABUTMENT



DRAIN BLOCKOUT  
DETAIL

NOTE:  
Deck slabs have been reinforced in accordance with State of Maine  
Dept. of Transportation Standard Details, Highway and Bridges  
DEC. 2002.

1	REISSUED FOR APPROVAL	SEPT. 8/03	CA
0	ISSUED FOR APPROVAL	AUG. 8/03	DN
NO.1	REVISION	DATE	BY



CONTRACTOR:  
CPM CONSTRUCTORS

CONSULTING ENGINEER / ARCHITECT:  
STATE OF MAINE  
DEPARTMENT OF TRANSPORTATION

PROJECT:  
STATE ROUTE 3  
INTERSTATE 95 SB  
AUGUSTA

TITLE:  
DECK SLAB LAYOUT &  
SECTIONS

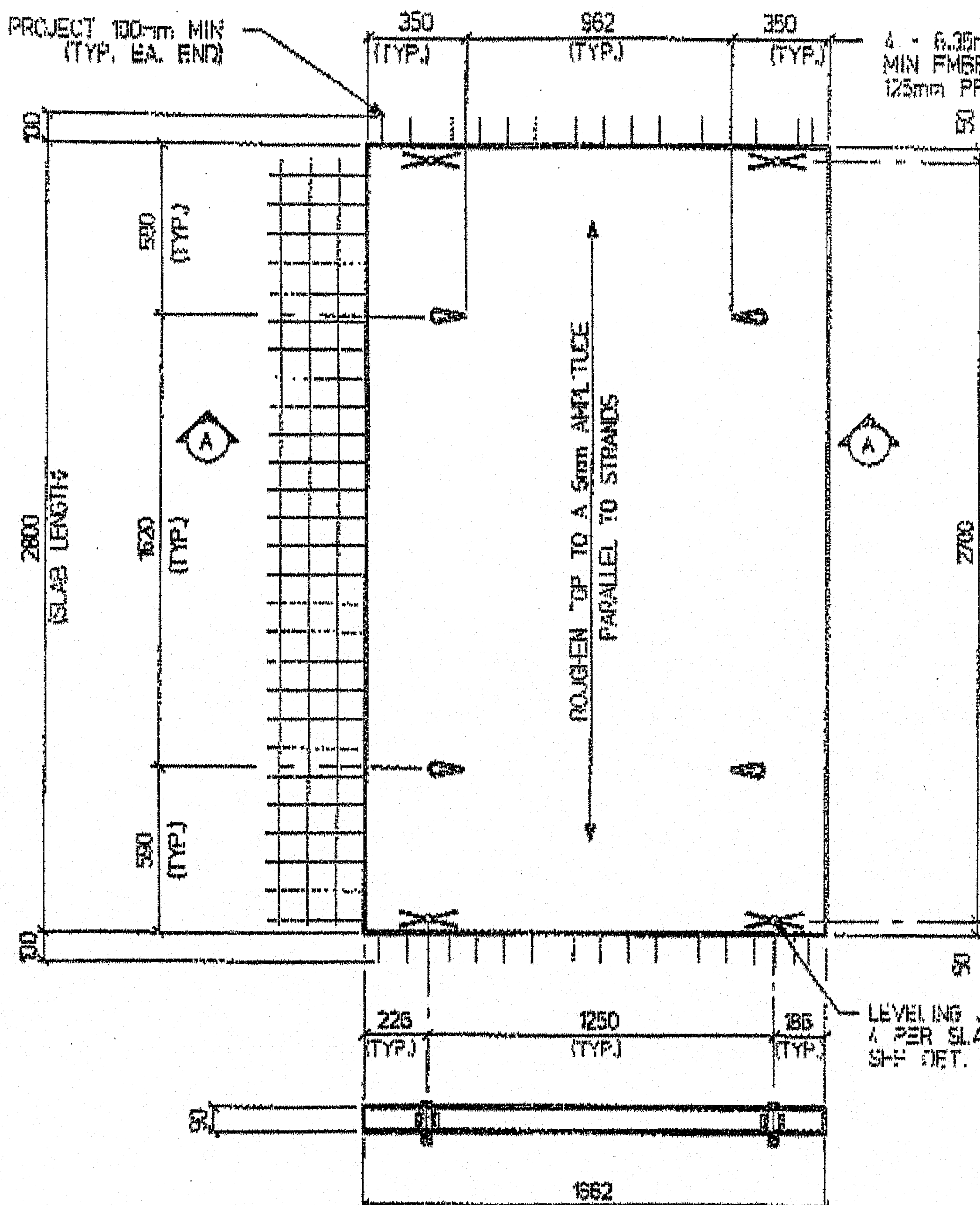
STRESCON LIMITED  
SAINT JOHN, N.B. BEDFORD, N.S.

DRAWN BY: DA	CHECKED BY: KY	DATE: AUG 8/03
DRAWING NO. S0387_AUGUSTA	CONTRACT NUMBER: S0387	DRAWING NO. E-3

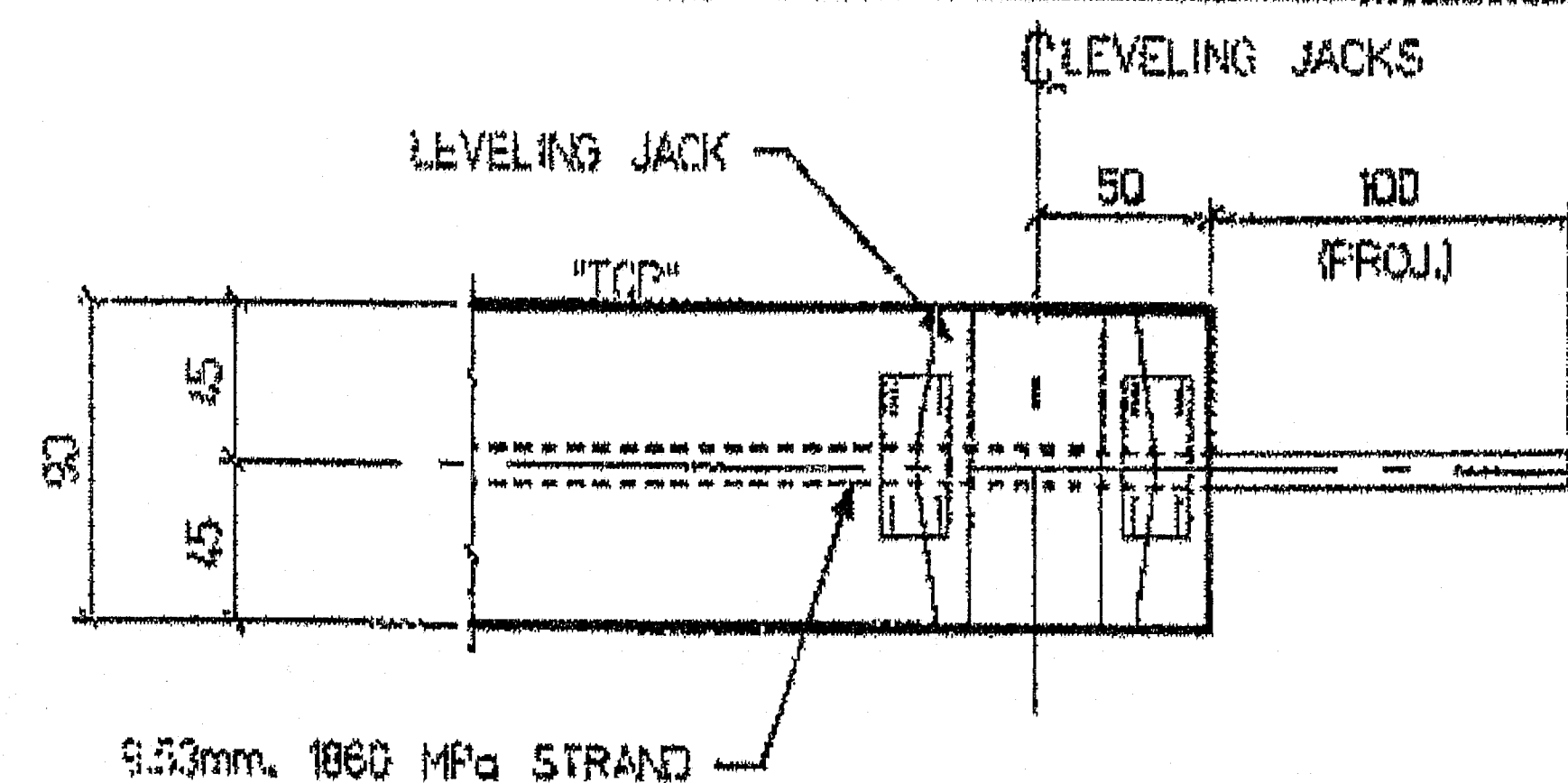
130-429



STRANDS PROJECT 100mm MIN  
(TYP. EA. END)



4 - 6.35mm AIR CRACK LIFTERS  
MIN EMBED. = 680mm  
125mm PROJECTION



DETAIL "B"

Reviewed. August 28, 2003  
Dan Glenn, Sr. Technician

DRAWING NOTES:

1. PRESTRESSING STRANDS 9.53mm dia., 1860 MPa, SEVEN WIRE, LOW RELAXATION STRANDS CONFORMING TO ASTM A415, INITIAL TENSION = 76.5 kN PER STRAND.
2. 28 DAY COMPRESSIVE STRENGTH = 34.5 MPa. 5000  
RELEASE STRENGTH = 28 MPa. 4000psi
3. WELDED WIRE MESH SHALL CONFORM TO ASTM A497.
4. ALL REINFORCING TO HAVE A MIN. 50mm COVER UNO.

No.	REVISION	DATE	BY
1	REVISED NOTE 3	AUG 22/03	DA
D	ISSUED FOR APPROVAL	AUG 8/03	DA

STRESCON  
LIMITED

HART JENKINS, BEDFORD, N.H.

Project:

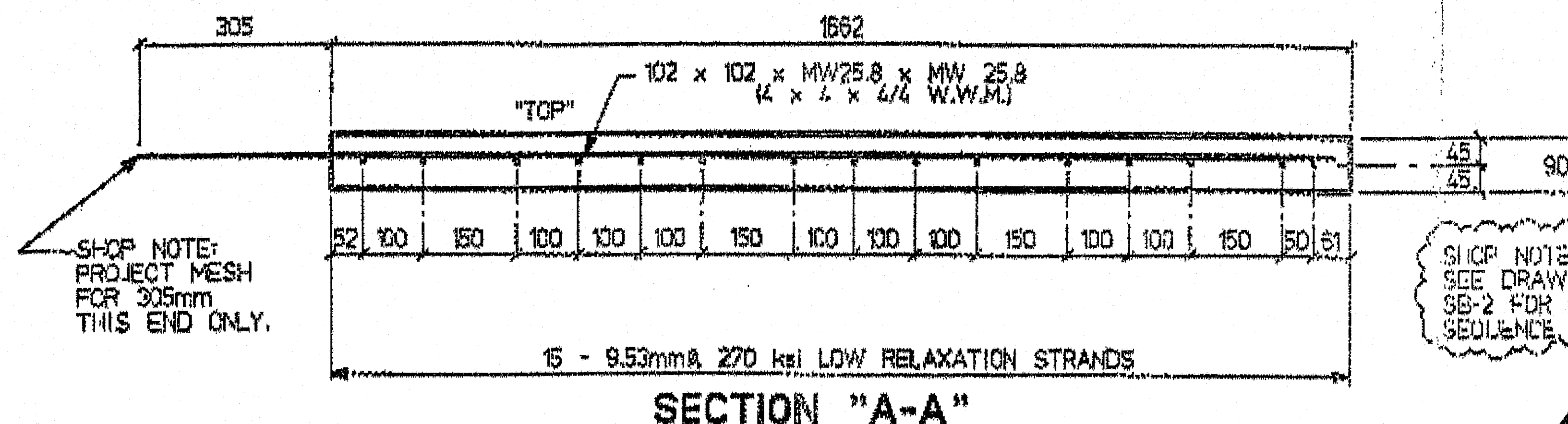
STATE ROUTE 3  
OVER INTERSTATE 95 SB

Title:

DECK SLAB DETAIL

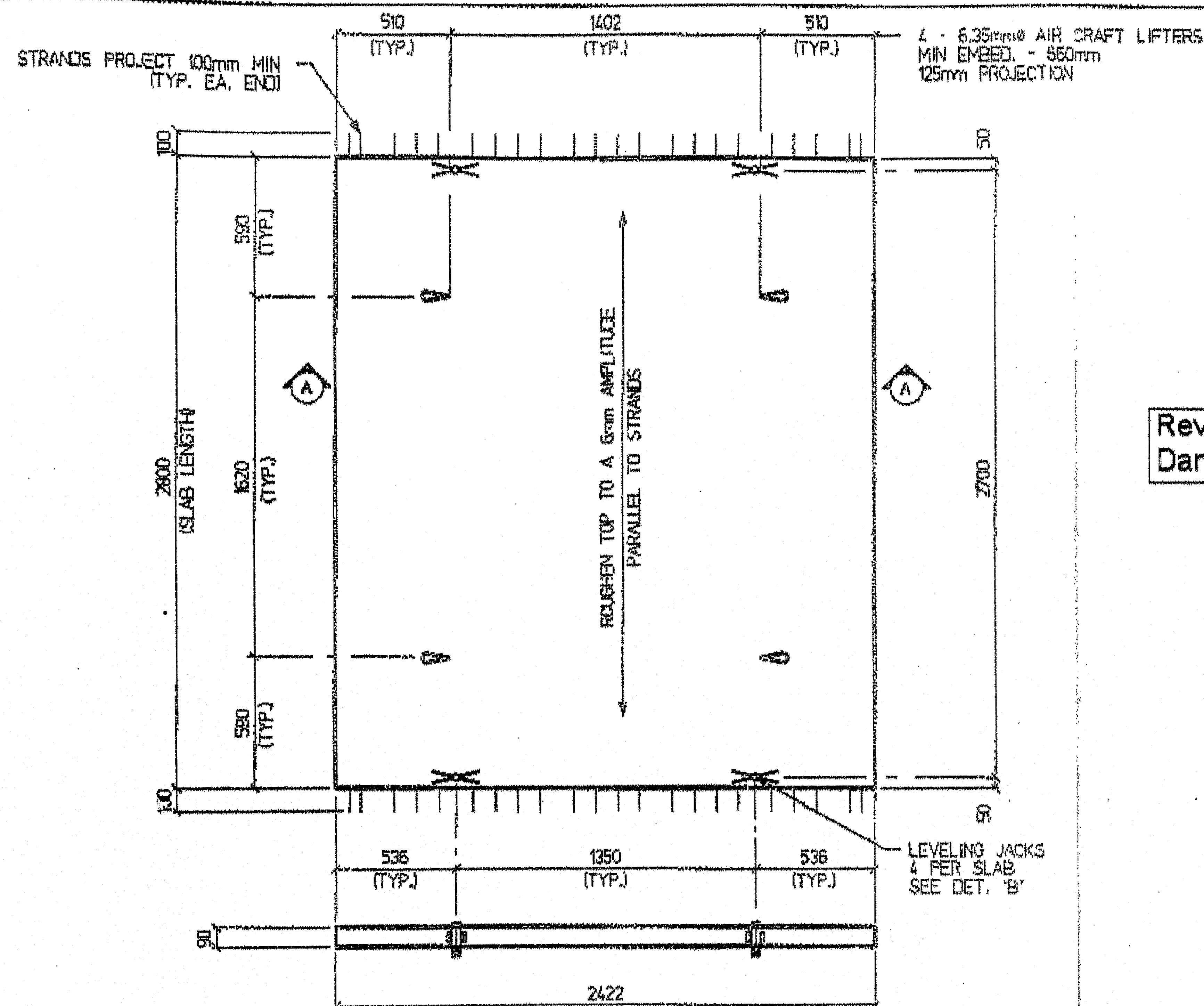
Drawn By: DA	Date: AUG 8/03	Job No. S0367
Checked By: KY	Database/Draw. File s0367_augusta	Draw. No. SB-1

DECK SLAB SB-1 ( 8 REQUIRED ) WEIGHT = 2 310 lbs

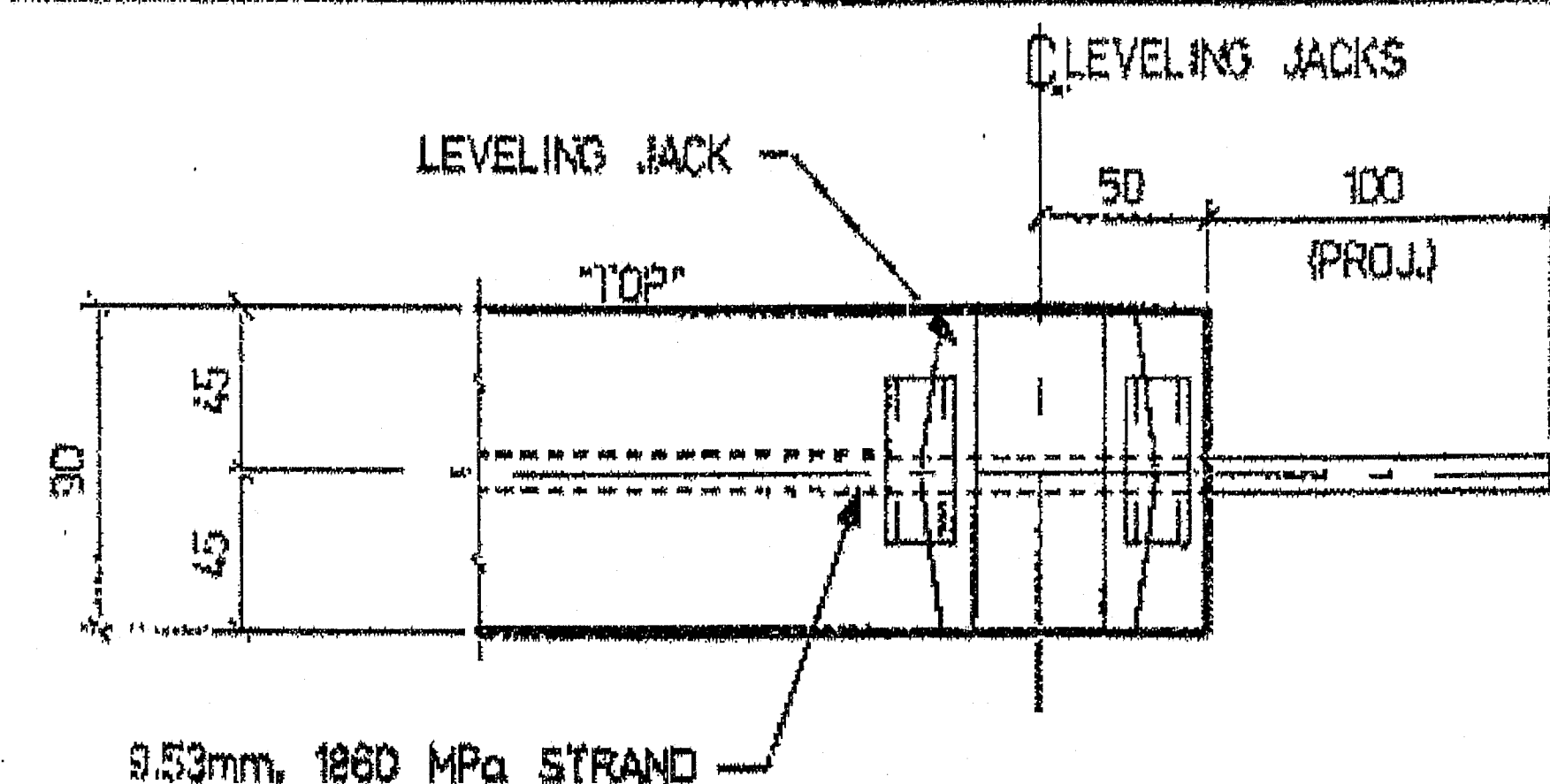
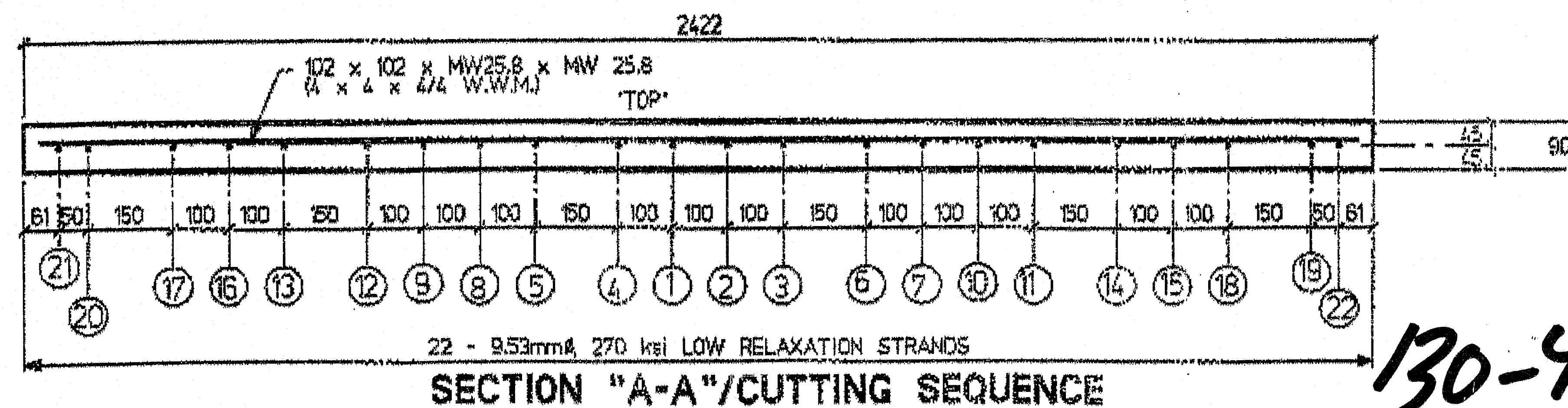


SECTION "A-A"

130-430



DECK SLAB SB-2 ( 67 REQUIRED ) WEIGHT = 3 300lbs



DETAIL "B"

Reviewed. August 28, 2003  
Dan Glenn, Sr. Technician

DRAWING NOTES:

- PRESTRESSING STRANDS 9.53mm dia., 1860 MPa. SEVEN WIRE, LOW RELAXATION STRANDS CONFORMING TO ASTM A418  
INITIAL TENSION = 76.5 kN PER STRAND.
- 28 DAY COMPRESSIVE STRENGTH = 34.5 MPa.  
RELEASE STRENGTH = 28 MPa.
- WELDED WIRE MESH SHALL CONFORM TO ASTM A497.
- ALL REINFORCING TO HAVE A MIN. 50mm COVER U.N.O.

No.	REVISION	DATE	BY
1	REVISED NOTE 3	AUG 22/03	DA
0	ISSUED FOR APPROVAL	AUG 8/03	DA

STRESSCON  
LIMITED

SART JON, N.E. DEPEND, N.E.

Project

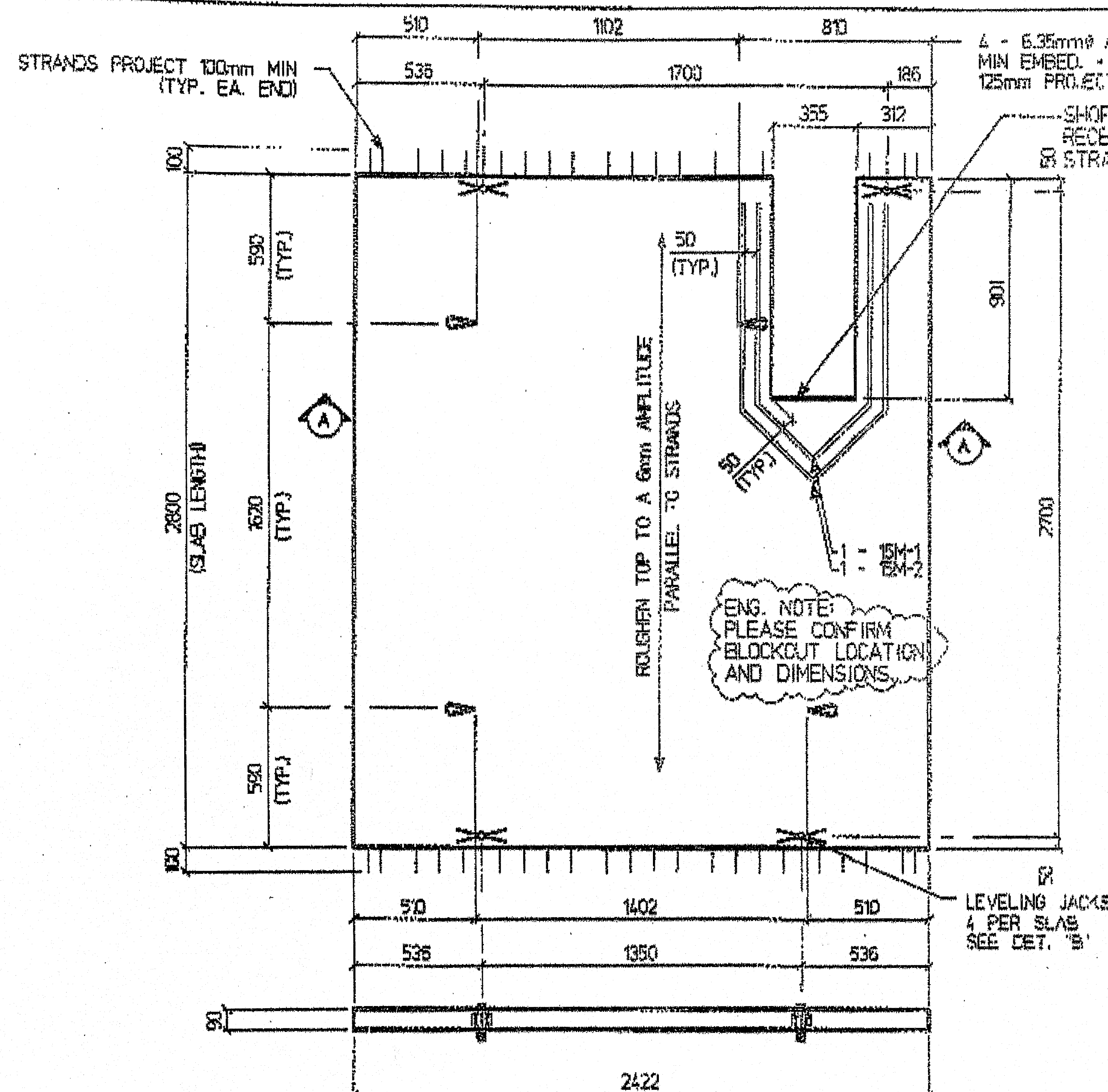
STATE ROUTE 3  
OVER INTERSTATE 95 SB

Title

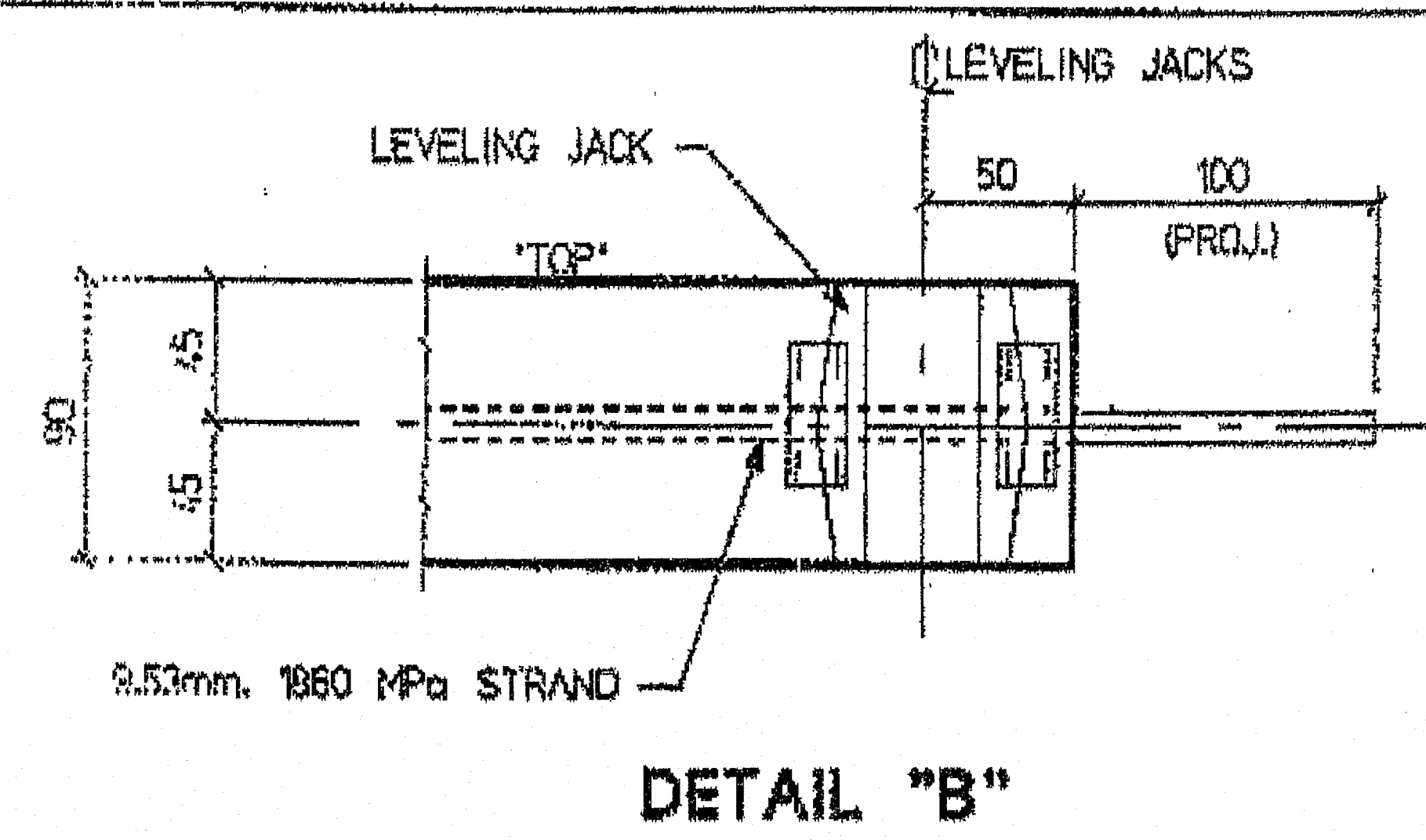
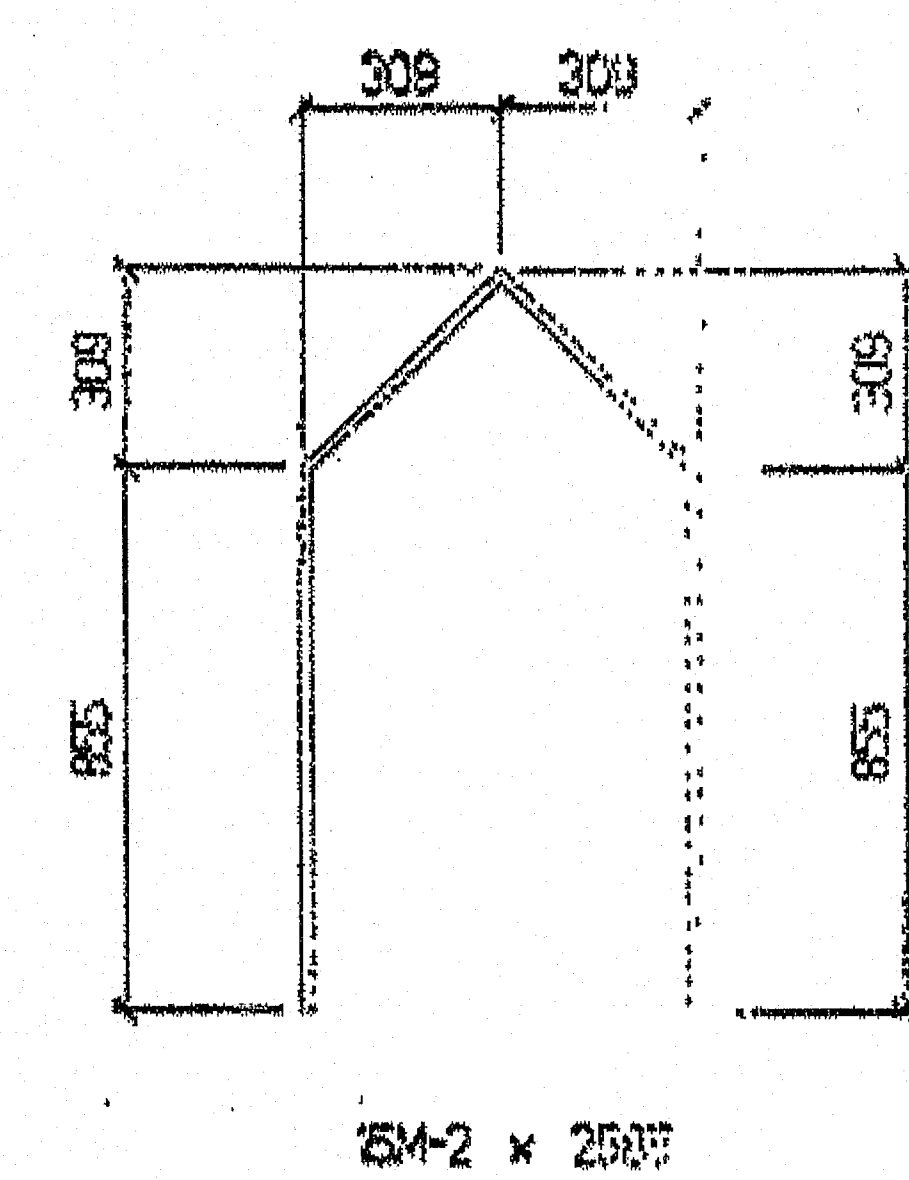
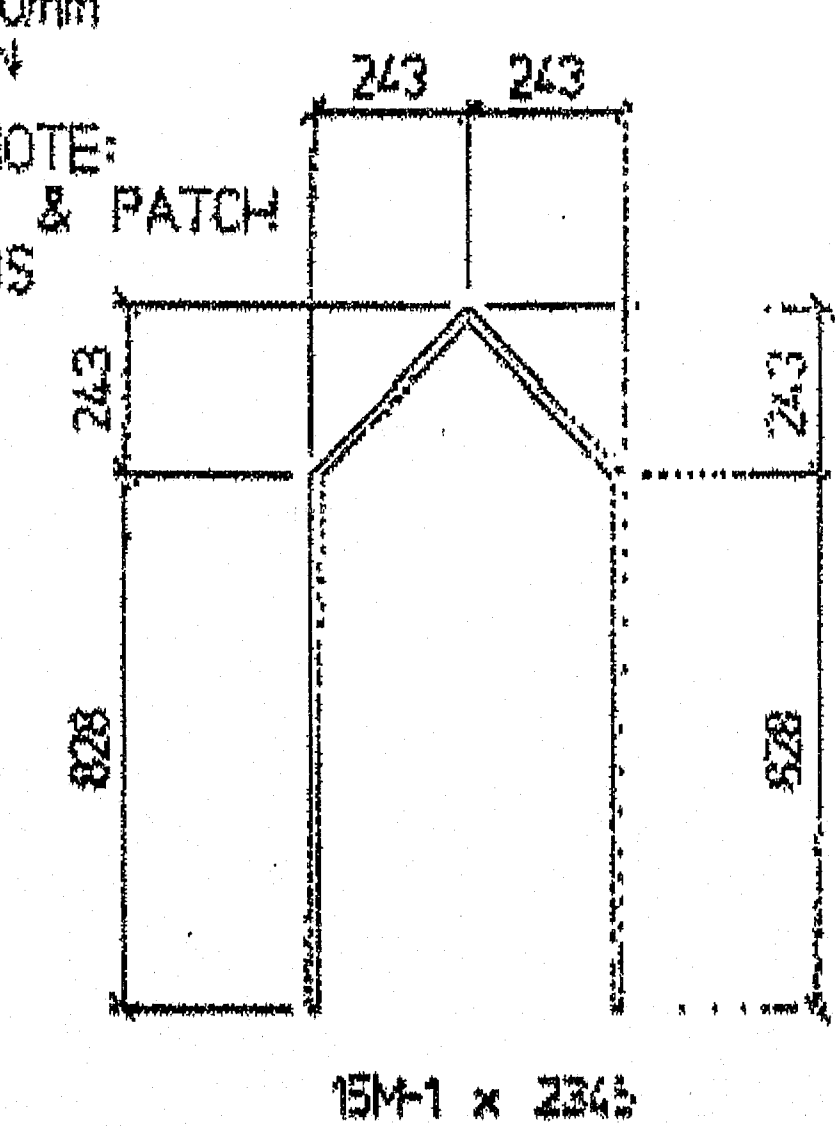
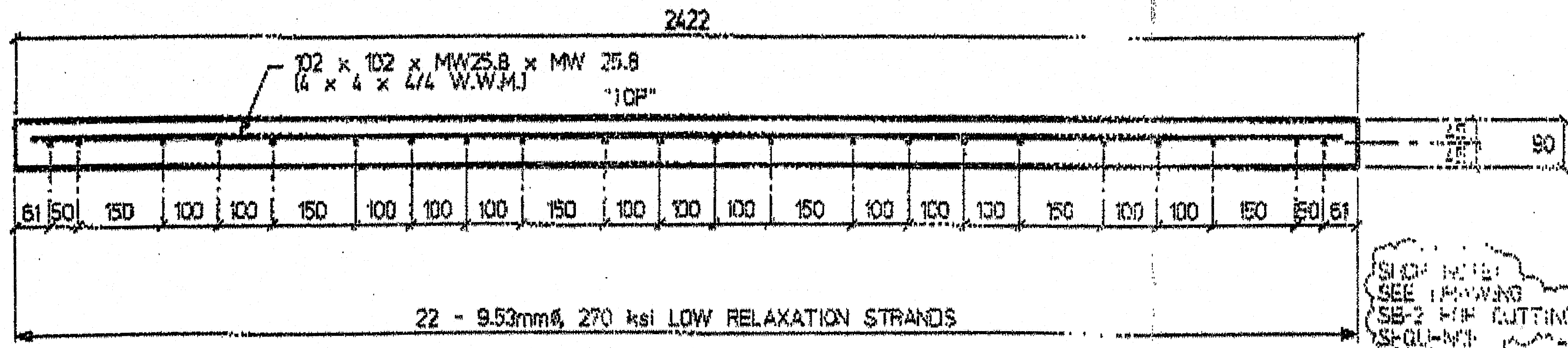
DECK SLAB DETAIL

Drawn By:	DA	Date:	AUG 8/03	Job No.	S0367
Checked By:	KY	Drawn/Drawn File:	s0367_augusta	Drawn No.	SB-2





DECK SLAB SB-3 ( 1 REQUIRED ) WEIGHT = 3 145lbs



Reviewed. August 28, 2003  
Dan Glenn, Sr. Technician

DRAWING NOTES:

1. PRESTRESSING STRANDS 9.53mm dia., 1860 MPa, SEVEN WIRE, LOW RELAXATION STRANDS CONFORMING TO ASTM A497 INITIAL TENSION = 76.5 kN PER STRAND.
2. 28 DAY COMPRESSIVE STRENGTH = 34.5 MPa. RELEASE STRENGTH = 28 MPa.
3. WELDED WIRE MESH SHALL CONFORM TO ASTM A497.
4. ALL REINFORCING TO HAVE A MIN. 50mm COVER U.N.O.

No.	REVISION	DATE	BY
1	REVISED NOTE 3	AUG 22/03	DA
0	ISSUED FOR APPROVAL	AUG 8/03	DA

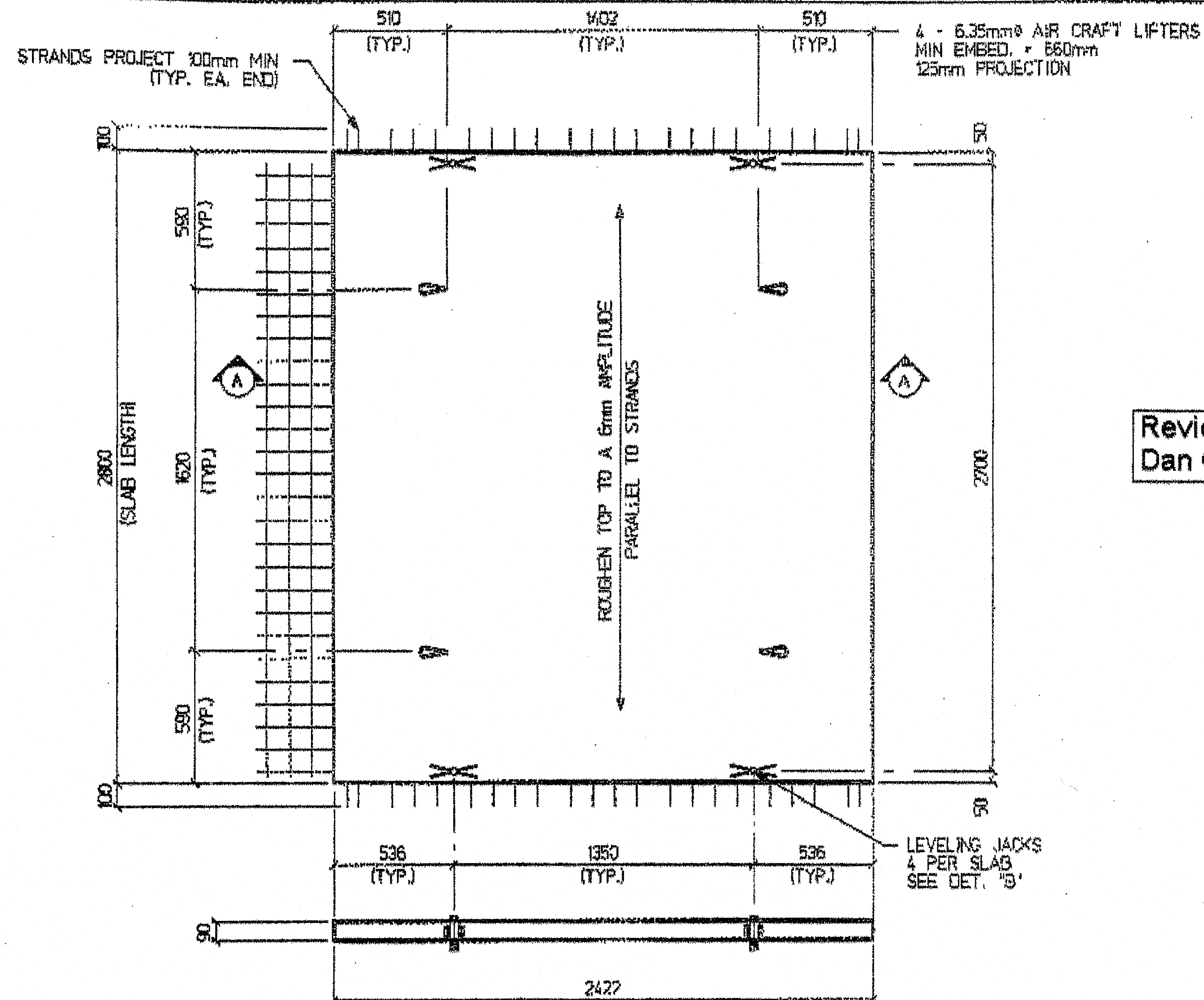
STRESCON  
LIMITED

SANT JUAN, N.M. 86505, N.M.

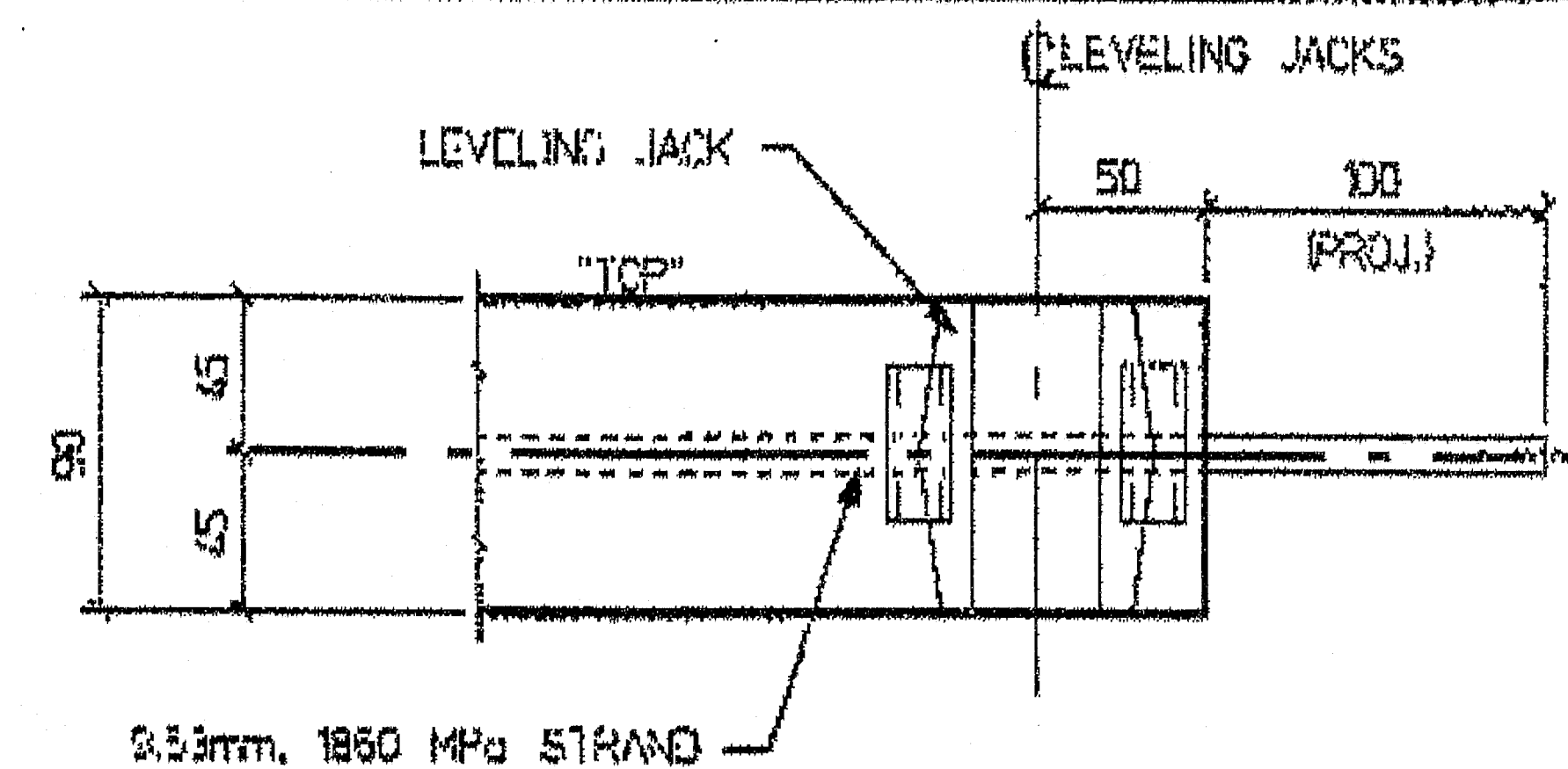
Project		
STATE ROUTE 3 OVER INTERSTATE 95 SB		
Title		
DECK SLAB DETAIL		
Drawn By	Date	Job No.
DA	AUG 8/03	S0367
Checked By	Database/Draw. File	Draw. No.
KY	s0367_augusta	SB-3 1

130-430





Reviewed. August 28, 2003  
Dan Glenn, Sr. Technician



DETAIL "B"

**DRAWING NOTES:**

1. PRESTRESSING STRANDS 9.53mm dia., 1860 MPa, SEVEN WIRE, LOW RELAXATION STRANDS CONFORMING TO ASTM A416. INITIAL TENSION = 76.5 kN PER STRAND.
2. 28 DAY COMPRESSIVE STRENGTH = 34.5 MPa. RELEASE STRENGTH = 28 MPa.
3. WELDED WIRE MESH SHALL CONFORM TO ASTM A497.
4. ALL REINFORCING TO HAVE A MIN. 50mm COVER U.N.D.

No.	REVISION	DATE	BY
1	REVISED NOTE 3	AUG 22/03	DA
0	ISSUED FOR APPROVAL	AUG 8/03	DA

**STRESCON**  
LIMITED

SANT JUAN, N.M. BEDFORD, N.H.

Project

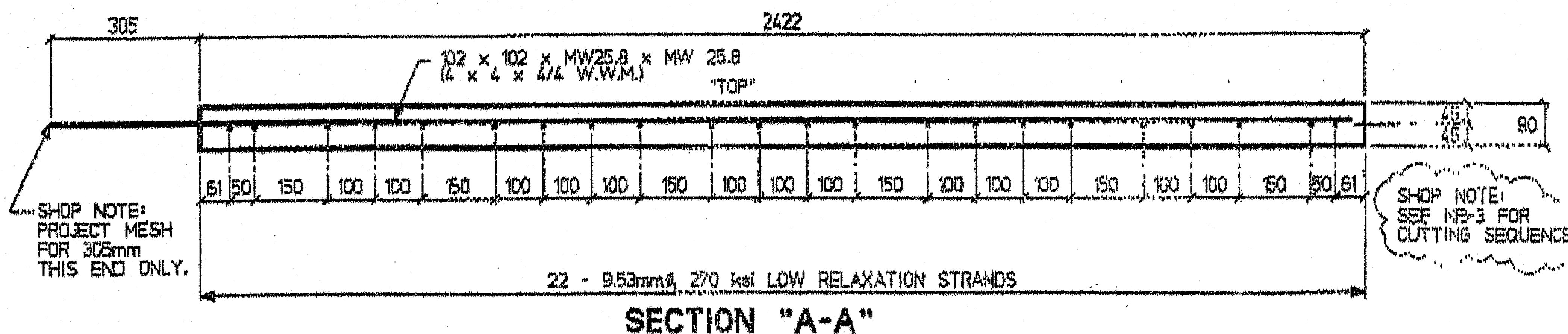
**STATE ROUTE 3  
OVER INTERSTATE 95 NB**

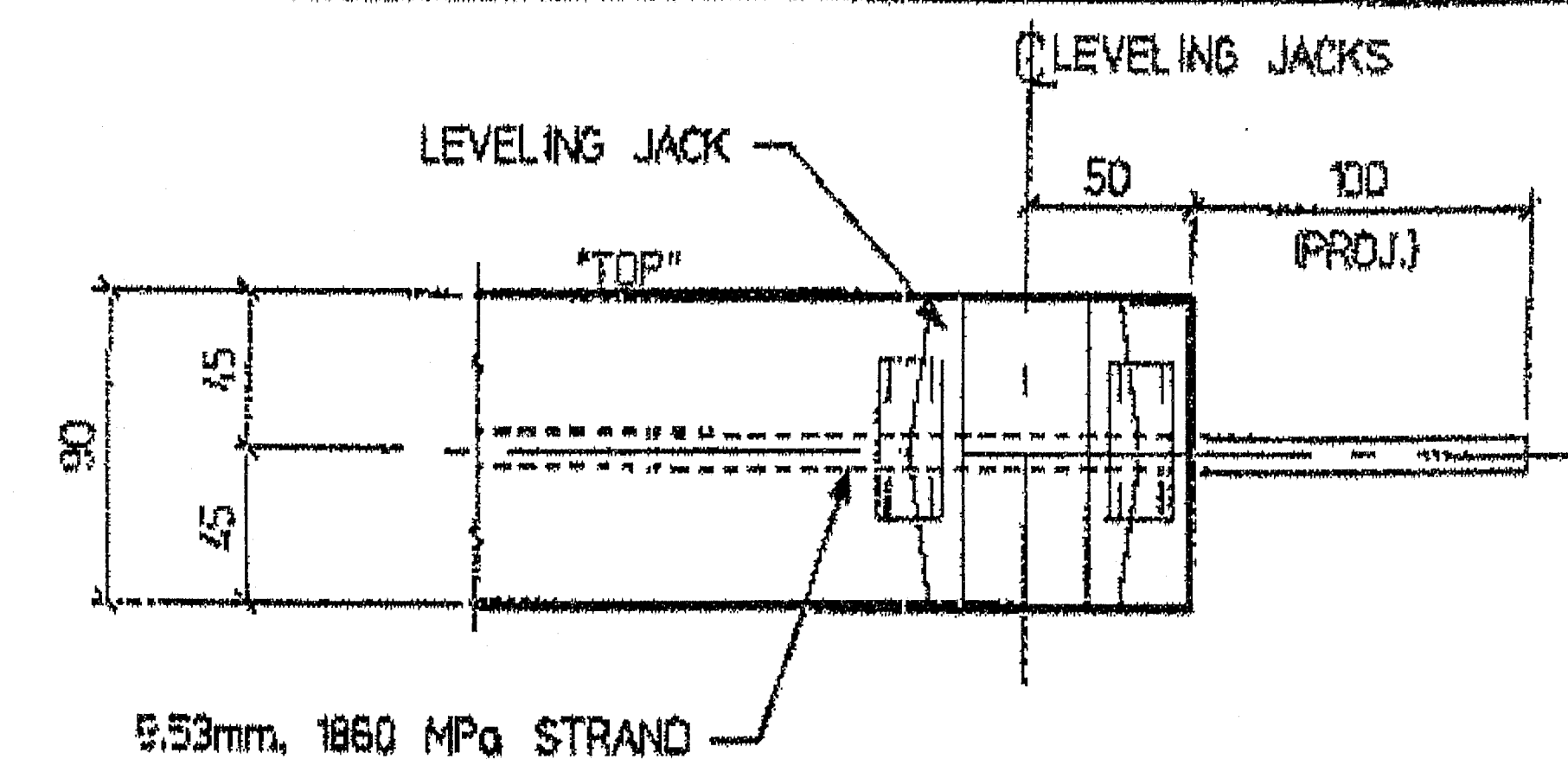
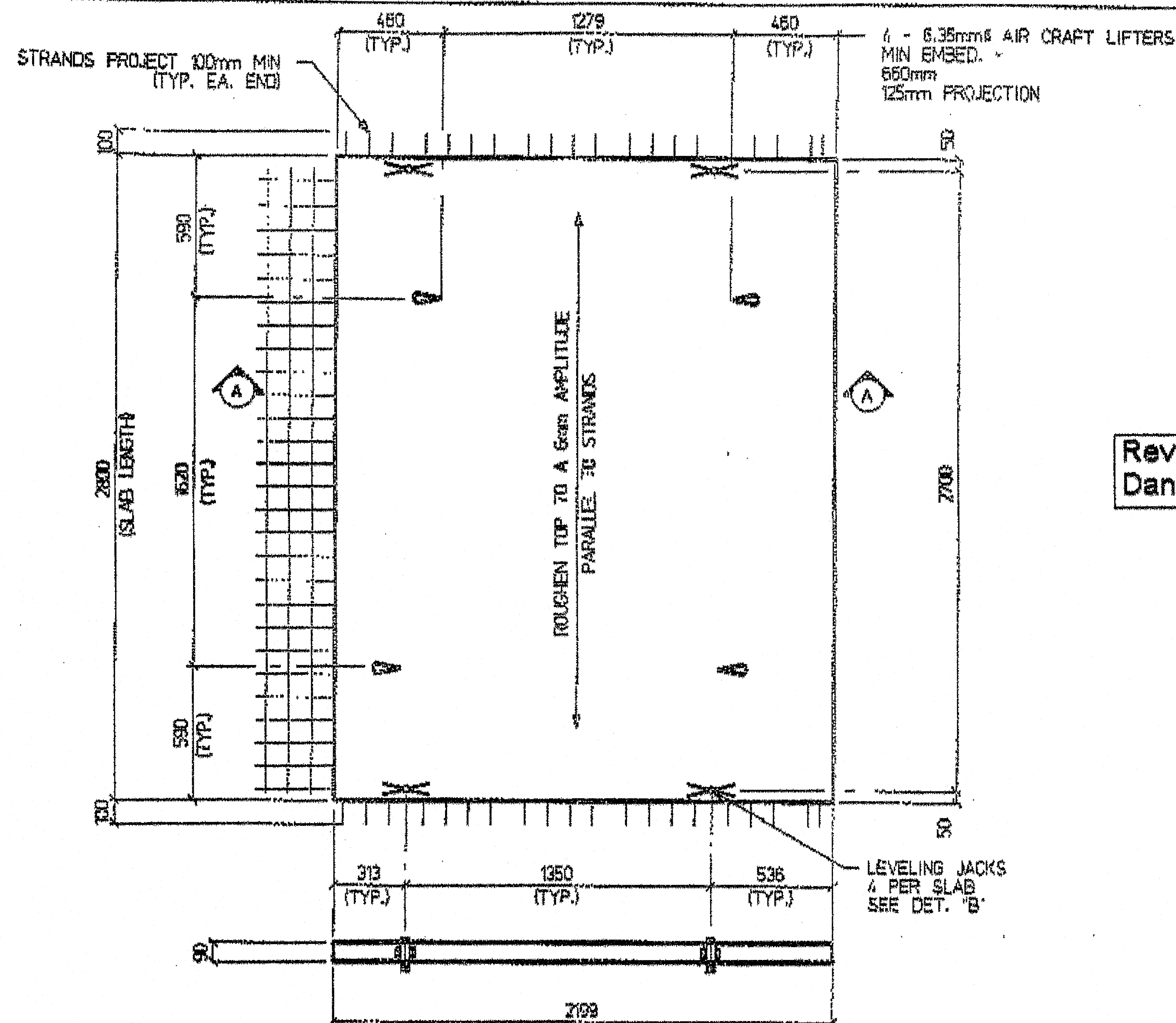
Title

**DECK SLAB DETAIL**

Drawn By:	DA	Date:	AUG 8/03	Job No.	<b>S0367</b>
Checked By:	KY	Database/Drawg. File	s0367_augusta	Drawg. No.	<b>NB-1</b> 1

**DECK SLAB NB-1 ( 4 REQUIRED ) WEIGHT = 3 300lbs**





DETAIL "B"

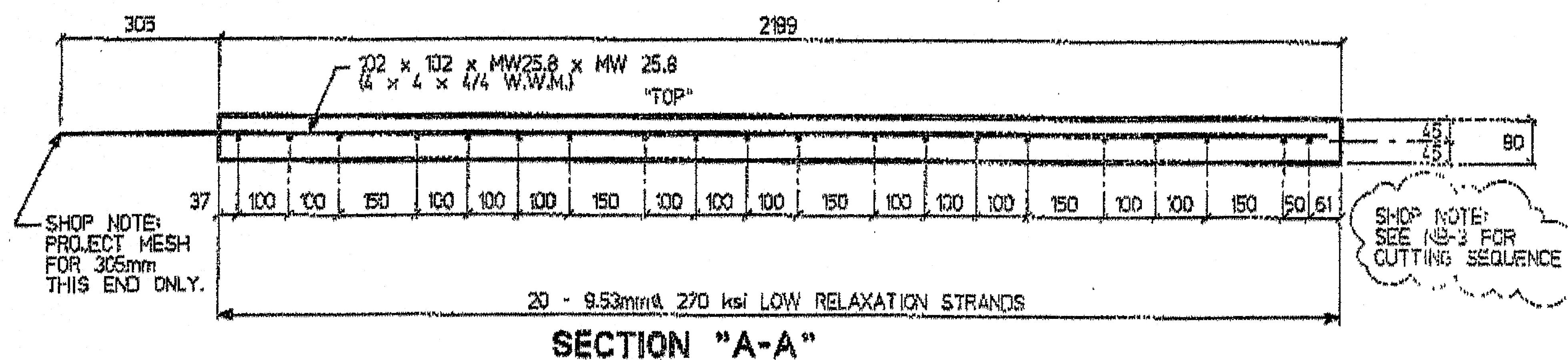
Reviewed. August 28, 2003  
Dan Glenn, Sr. Technician

DRAWING NOTES:

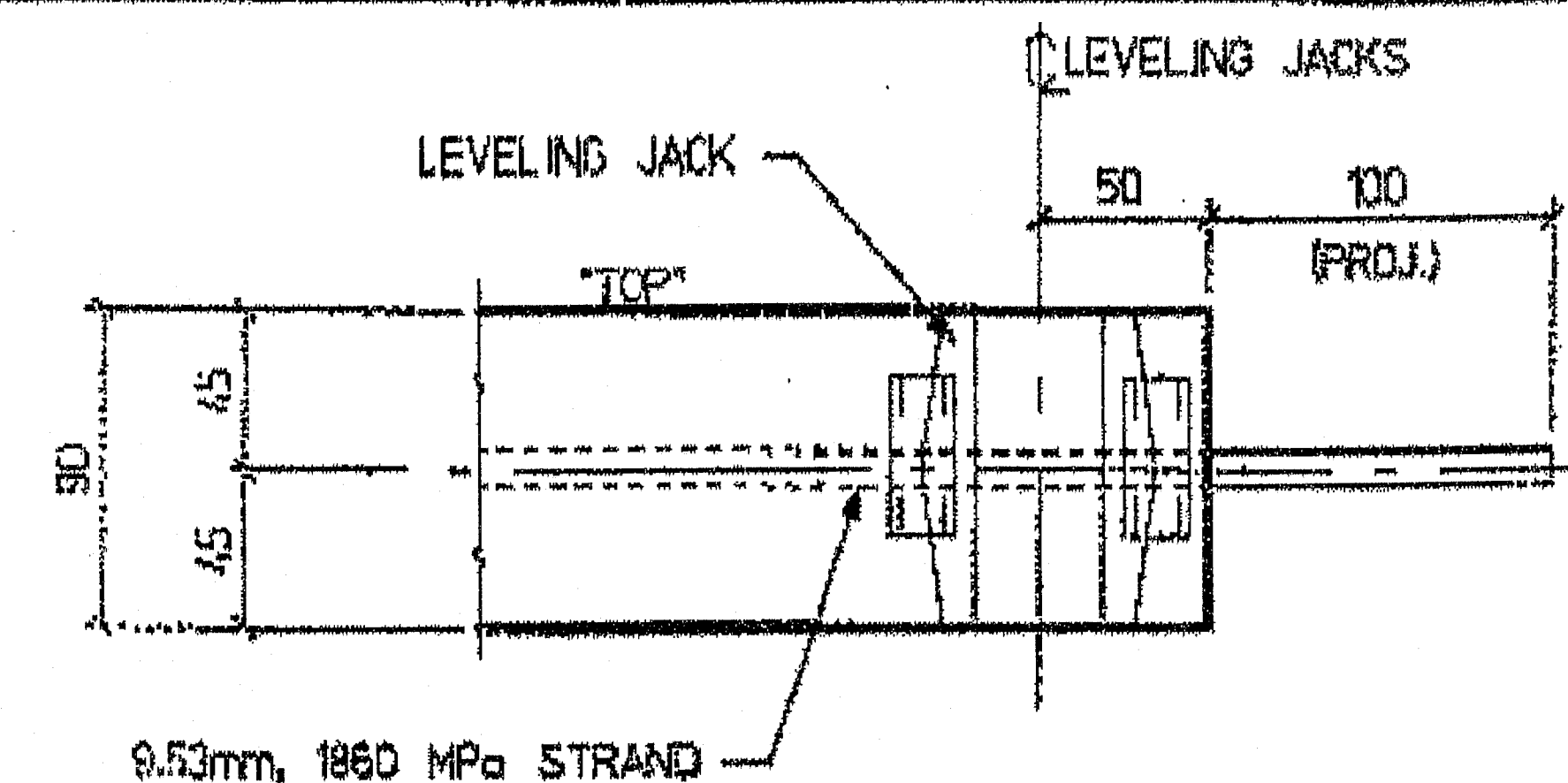
1. PRESTRESSING STRANDS 9.53mm dia., 1860 MPa, SEVEN WIRE, LOW RELAXATION STRANDS CONFORMING TO ASTM A415, INITIAL TENSION = 76.5 kN PER STRAND.
2. 28 DAY COMPRESSIVE STRENGTH = 34.5 MPa, RELEASE STRENGTH = 28 MPa.
3. WELDED WIRE MESH SHALL CONFORM TO ASTM A497.
4. ALL REINFORCING TO HAVE A MIN. 50mm COVER U.N.O.

No.	REVISION	DATE	BY
1	REVISED NOTE 3	AUG 22/03	DA
0	ISSUED FOR APPROVAL	AUG 8/03	DA
<b>STRESCON</b> LIMITED BANT JCH, N.E. INDFRD, N.E. Project: <b>STATE ROUTE 3 OVER INTERSTATE 95 NB</b> Title: <b>DECK SLAB DETAIL</b> Drawn By: <b>DA</b> Date: <b>AUG 8/03</b> Job No. <b>S0367</b> Checked By: <b>KY</b> Database/Drawg. File: <b>s0367_augusta</b> Drawg. No. <b>NB-2</b>			

DECK SLAB NB-2 ( 3 REQUIRED ) WEIGHT = 3 000lbs







Reviewed. August 28, 2003  
Dan Glenn, Sr. Technician

1. PRESTRESSING STRANDS 9.53mm dia., 1860 MPa, SEVEN WIRE,  
LOW RELAXATION STRANDS CONFORMING TO ASTM A416  
INITIAL TENSION = 76.5 kN PER STRAND.

2. 28 DAY COMPRESSIVE STRENGTH = 34.5 MPa.  
RELEASE STRENGTH = 28 MPa.

3. WELDED WIRE MESH SHALL CONFORM TO ASTM A497.

4. ALL REINFORCING TO HAVE A MIN. 50mm COVER U.N.O.

1	REVISED NOTE 3	AUG 22/03	DA
0	ISSUED FOR APPROVAL	AUG 8/03	DA
No.	REVISION#	DATE	BY

DATE	10-21-68	BY	REDFORD, NIG
------	----------	----	--------------

### Projects

STATE ROUTE 3  
OVER INTERSTATE 95 NB

Time:

### DECK SLAB DETAIL

DATA BY:

DA

Date:

AUG 5/03

Table 1

50367

Charles G. Bly

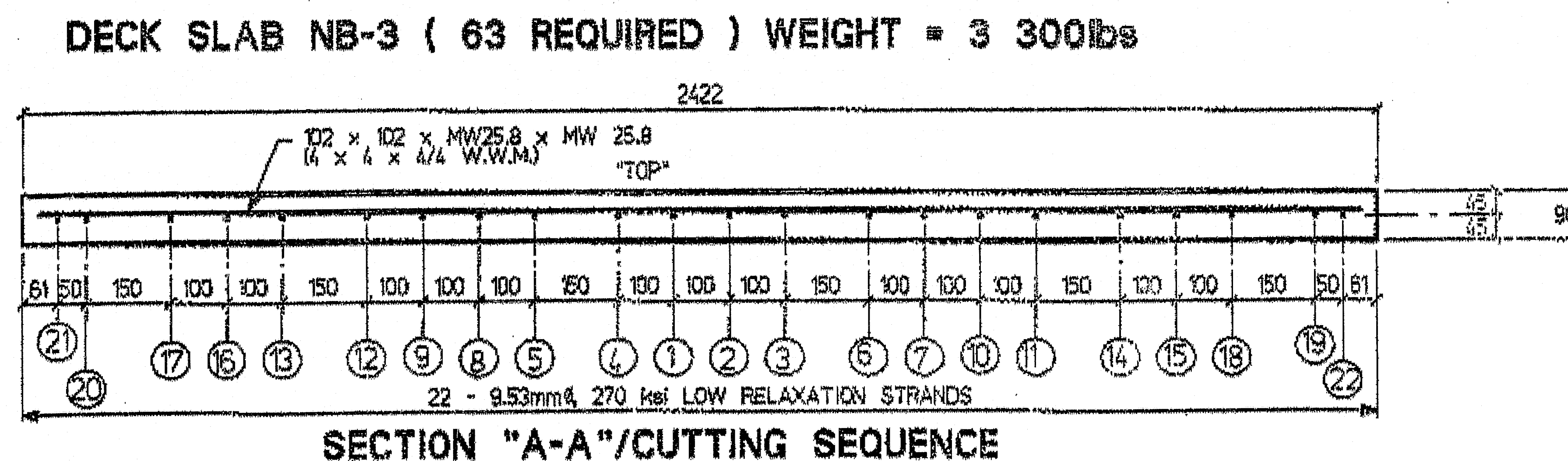
NY

Original/Dryg. File

**s0367\_augusta**

Dr. H. H.

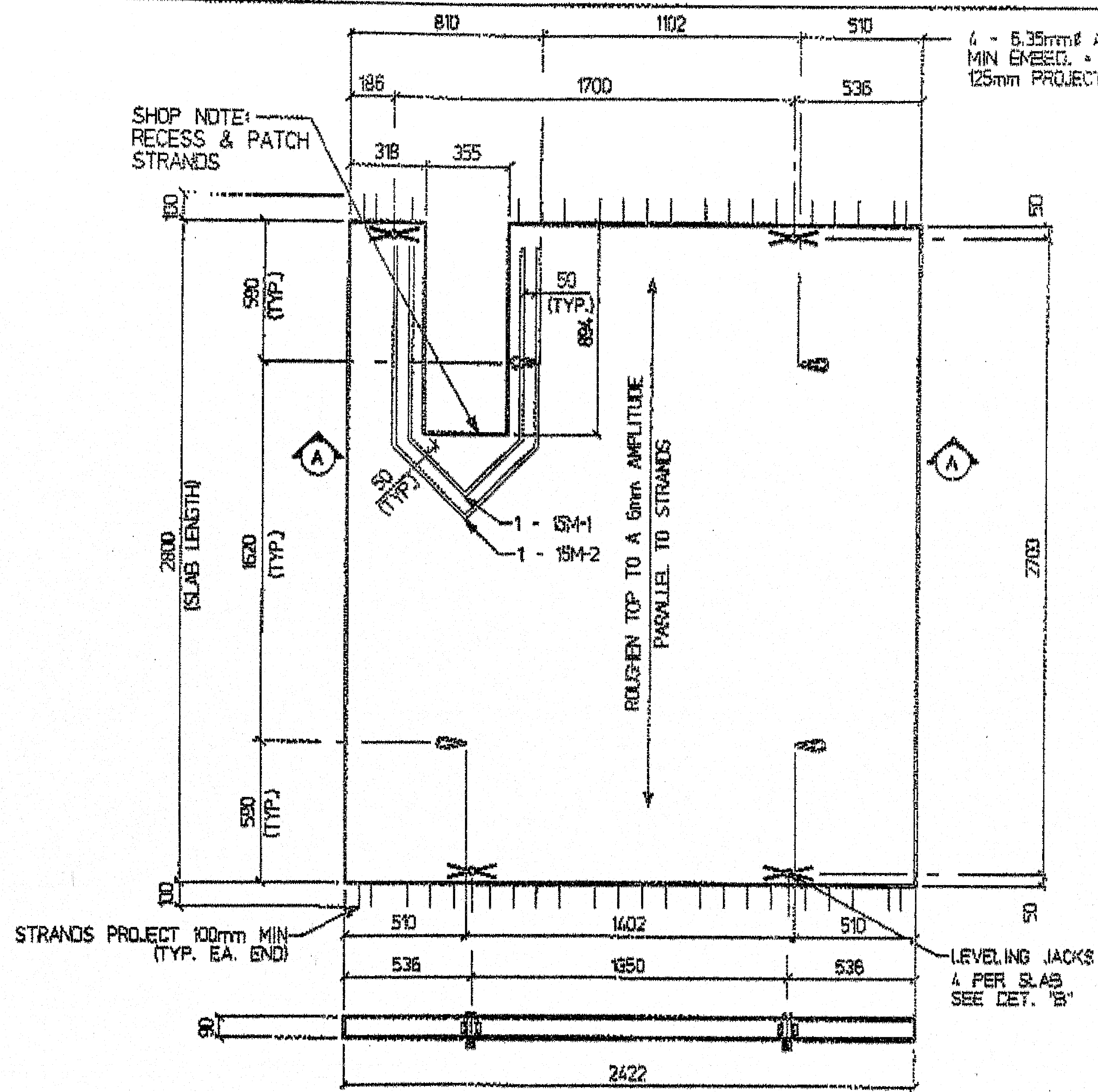
**NB-3**



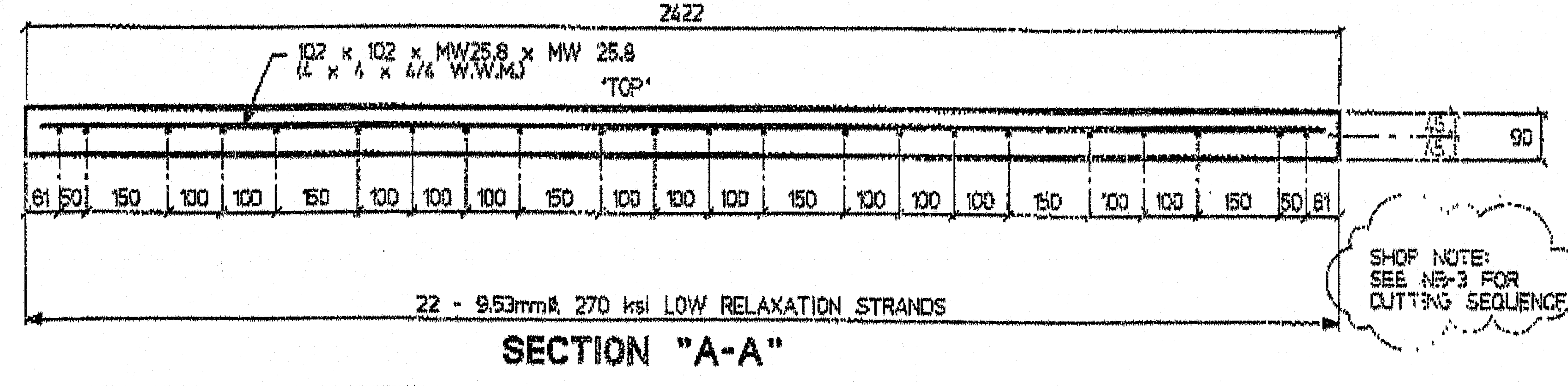




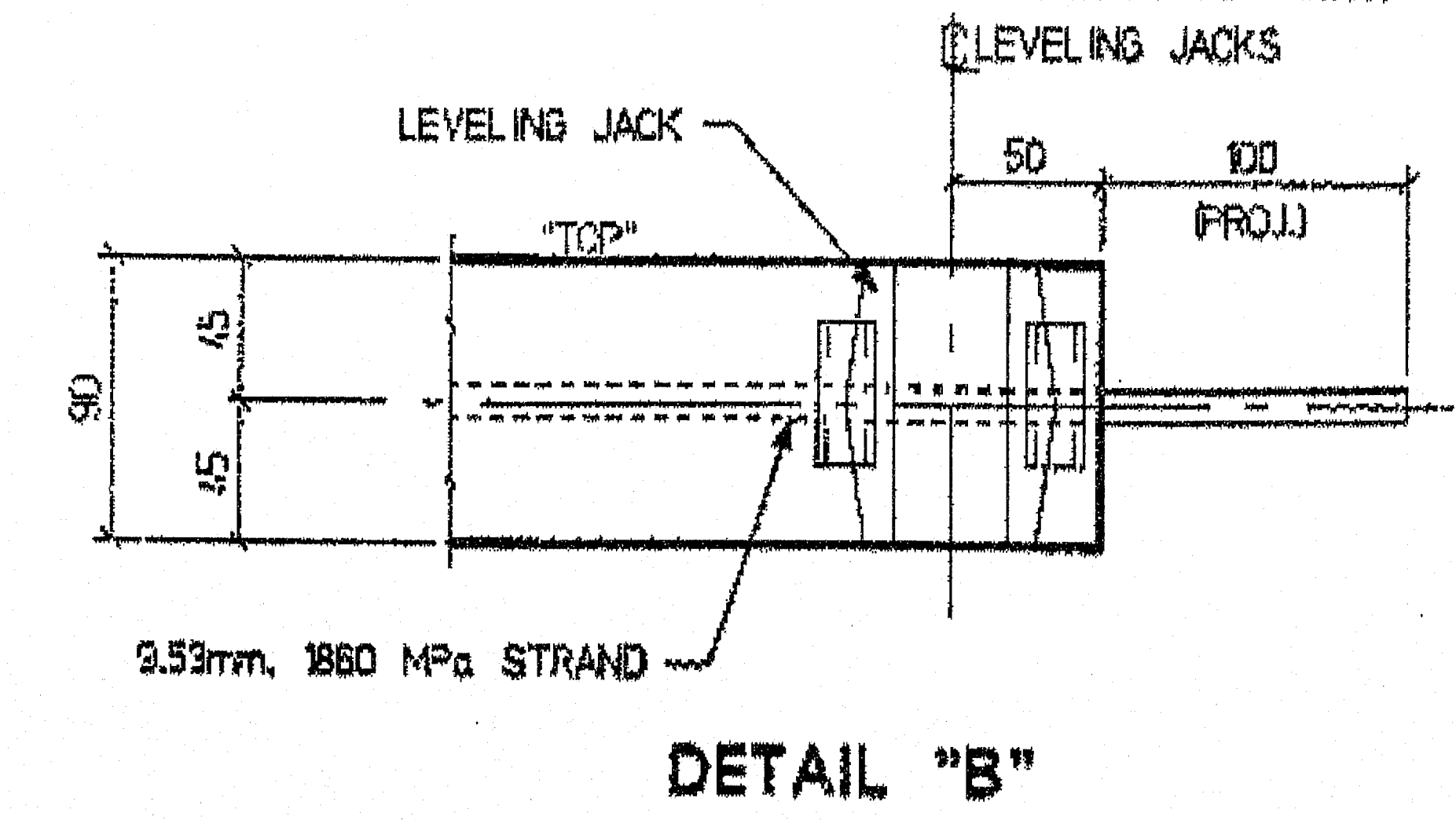
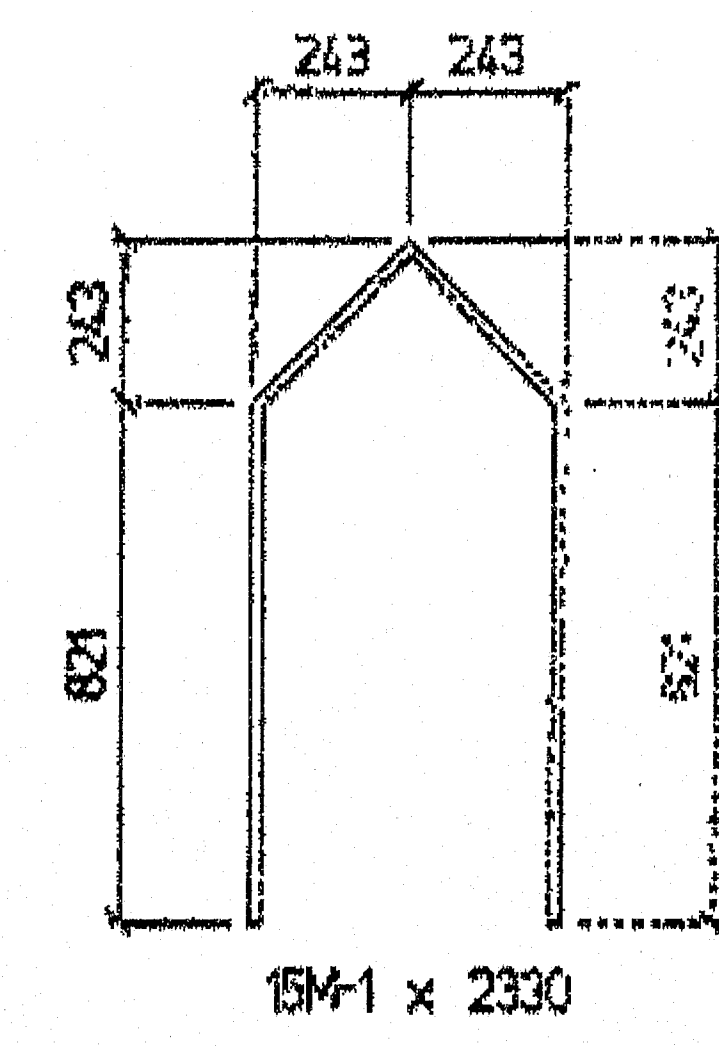




DECK SLAB NB-5 ( 1 REQUIRED ) WEIGHT = 3 145lbs



4 - 5.35mm dia. AIR CRAFT LIFTERS  
MIN EMBED. = 660mm  
125mm PROJECTION



Reviewed. August 28, 2003  
Dan Glenn, Sr. Technician

DRAWING NOTES:

1. PRESTRESSING STRANDS 9.53mm dia., 1860 MPa. SEVEN WIRE, LOW RELAXATION STRANDS CONFORMING TO ASTM A416. INITIAL TENSION = 76.5 kN PER STRAND.
2. 28 DAY COMPRESSIVE STRENGTH = 34.5 MPa. RELEASE STRENGTH = 28 MPa.
3. WELDED WIRE MESH SHALL CONFORM TO ASTM A497.
4. ALL REINFORCING TO HAVE A MIN. 50mm COVER U.N.O.

1	REVISED NOTE 3	AUG 22/03	DA
0	ISSUED FOR APPROVAL	AUG 8/03	DA
No.	REVISION	DATE	BY
<b>STRESCON</b> LIMITED SAINT JOHN, NB. INCORPORATED, NB.			
Project: <b>STATE ROUTE 3 OVER INTERSTATE 95 NB</b>			
Title: <b>DECK SLAB DETAIL</b>			
Drawn By:	DA	Date:	AUG 8/03
Checked By:	KY	Database/Draw. File:	s0367_augusta
		Job No.:	<b>S0367</b>
		Draw. No.:	<b>NB-5</b>